

Universal analog measuring case with integrated datalogger

- Standard data rate of 1 second
- 1000 days long time logging
- 8 universal analogue inputs
- 4 different measuring points
- PC-Program for 16 compressors
and 16 analogue sensors



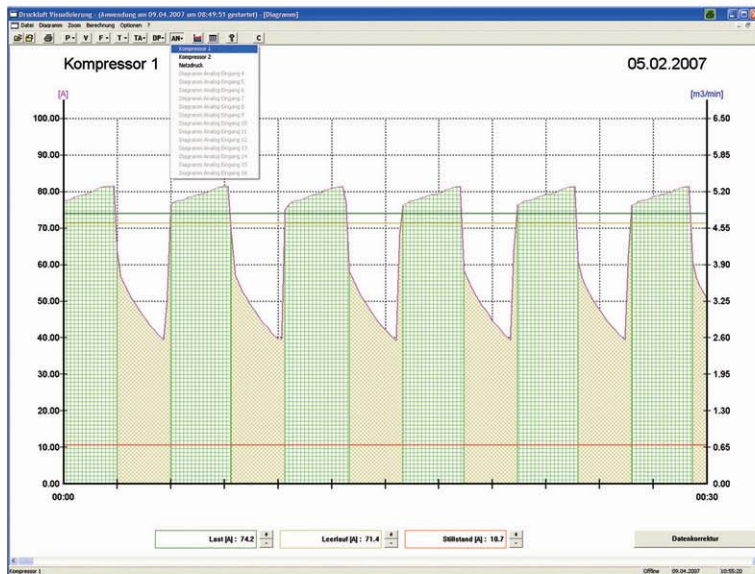
WF STEUERUNGSTECHNIK GMBH

WF Steuerungstechnik GmbH, Zeppelinstr. 7-9, 75446 Wiernsheim,
Tel. 07044/91 11 00, Fax 07044/5717

Real-time analysis for compressed air stations

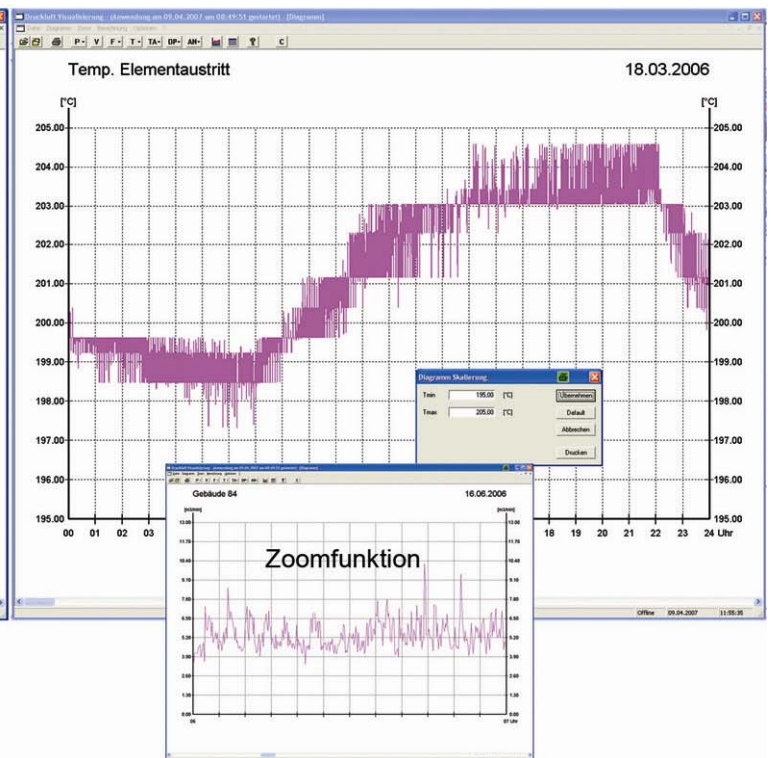
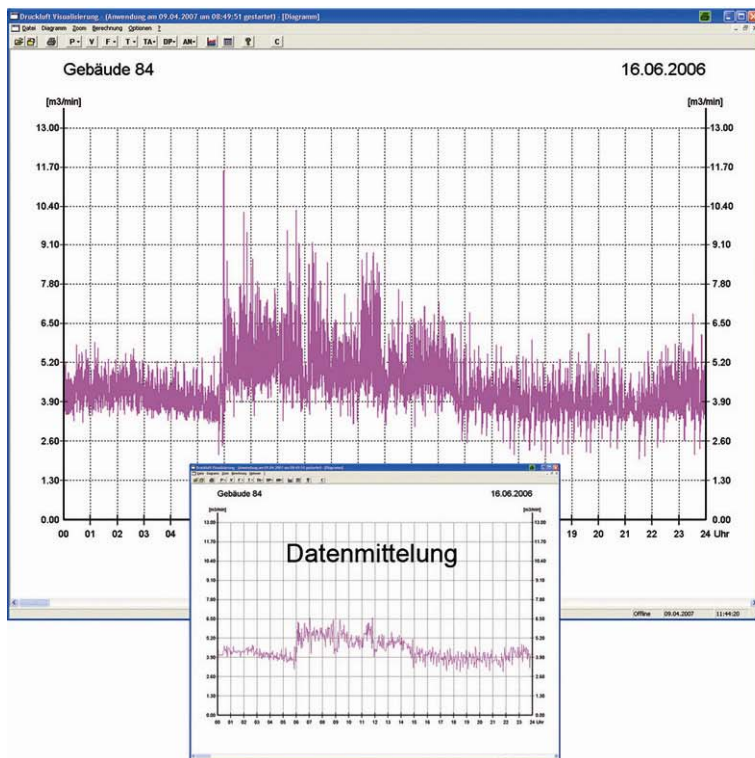
1.
Adjust the Amperé for load / unload compressors

2.
Adjust the Amperé for variable speed compressors



Flowdiagram with different Average settings

Flexible zoom functions for diagrams



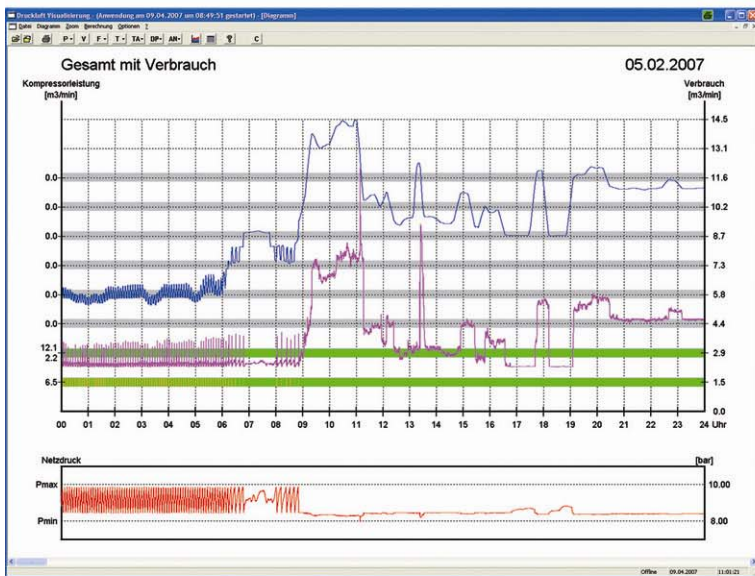
Flexible and accurate analysis of all logging data

3.

Shows pressure, air consumption and status of the compressors

4.

The week view shows the air consumption for each day



Data analysis

Extrapolation of the data

Kompressor Daten (Messung 02.02.2007 - 08.02.2007)												
Kanal	Kompressor	Leistung [m3/min]		Last [kW]		Leerlauf [h:mm:ss]	Messzeit [h:mm:ss]	Laufzeit [%]	Lastzeit [h:mm:ss]	Leerlaufzeit [h:mm:ss]		
		min	max	min	max							
1	Kompressor 1	0.0	8.5	0.0	60.39	18.53	152:27:50	99.37	130:13:30	65.89	21:16:20	14:04
2	Kompressor 2	2.2	12.1	25.20	104.10	0.00	152:27:50	99.30	151:24:10	100.00	00:00:00	0:00
3	Kompressor 3	0.0	0.0	0.00	0.00	0.00	152:27:50	0.00	00:00:00	0.00	00:00:00	0:00
4	Kompressor 4	0.0	0.0	0.00	0.00	0.00	152:27:50	0.00	00:00:00	0.00	00:00:00	0:00
5	Kompressor 5	0.0	0.0	0.00	0.00	0.00	152:27:50	0.00	00:00:00	0.00	00:00:00	0:00
6	Kompressor 6	0.0	0.0	0.00	0.00	0.00	152:27:50	0.00	00:00:00	0.00	00:00:00	0:00
7	Kompressor 7	0.0	0.0	0.00	0.00	0.00	152:27:50	0.00	00:00:00	0.00	00:00:00	0:00
8	Kompressor 8	0.0	0.0	0.00	0.00	0.00	152:27:50	0.00	00:00:00	0.00	00:00:00	0:00
9	Kompressor 9	0.0	0.0	0.00	0.00	0.00	152:27:50	0.00	00:00:00	0.00	00:00:00	0:00
10	Kompressor 10	0.0	0.0	0.00	0.00	0.00	152:27:50	0.00	00:00:00	0.00	00:00:00	0:00
11	Kompressor 11	0.0	0.0	0.00	0.00	0.00	152:27:50	0.00	00:00:00	0.00	00:00:00	0:00
12	Kompressor 12	0.0	0.0	0.00	0.00	0.00	152:27:50	0.00	00:00:00	0.00	00:00:00	0:00
13	Kompressor 13	0.0	0.0	0.00	0.00	0.00	152:27:50	0.00	00:00:00	0.00	00:00:00	0:00
14	Kompressor 14	0.0	0.0	0.00	0.00	0.00	152:27:50	0.00	00:00:00	0.00	00:00:00	0:00
15	Kompressor 15	0.0	0.0	0.00	0.00	0.00	152:27:50	0.00	00:00:00	0.00	00:00:00	0:00
16	Kompressor 16	0.0	0.0	0.00	0.00	0.00	152:27:50	0.00	00:00:00	0.00	00:00:00	0:00

Messdaten (Messung 02.02.2007 - 08.02.2007)										
Kanal	Kompressor	Schaltungen		Gesamte Energie [kWh]			Druckluft [m3]	Kostenberechnung [€]		
		Motor	Last	Last	Leerlauf	Gesamt		Last	Leerlauf	Gesamt
1	Kompressor 1	2	492	6581.59	415.50	6977.09	50789.0	524.93	33.24	558.17
2	Kompressor 2	2	2	6279.39	0.00	6279.39	38540.0	502.35	0.00	502.35
3	Kompressor 3	0	0	0.00	0.00	0.00	0.00	0.00	0.00	0.00
4	Kompressor 4	0	0	0.00	0.00	0.00	0.00	0.00	0.00	0.00
5	Kompressor 5	0	0	0.00	0.00	0.00	0.00	0.00	0.00	0.00
6	Kompressor 6	0	0	0.00	0.00	0.00	0.00	0.00	0.00	0.00
7	Kompressor 7	0	0	0.00	0.00	0.00	0.00	0.00	0.00	0.00
8	Kompressor 8	0	0	0.00	0.00	0.00	0.00	0.00	0.00	0.00
9	Kompressor 9	0	0	0.00	0.00	0.00	0.00	0.00	0.00	0.00
10	Kompressor 10	0	0	0.00	0.00	0.00	0.00	0.00	0.00	0.00
11	Kompressor 11	0	0	0.00	0.00	0.00	0.00	0.00	0.00	0.00
12	Kompressor 12	0	0	0.00	0.00	0.00	0.00	0.00	0.00	0.00
13	Kompressor 13	0	0	0.00	0.00	0.00	0.00	0.00	0.00	0.00
14	Kompressor 14	0	0	0.00	0.00	0.00	0.00	0.00	0.00	0.00
15	Kompressor 15	0	0	0.00	0.00	0.00	0.00	0.00	0.00	0.00
16	Kompressor 16	0	0	0.00	0.00	0.00	0.00	0.00	0.00	0.00

Leistungskennzahl	
Firma	Stetter
Standort	Stuttgart
Kompressor Station	Werk II
Start der Messung	02.02.2007
Ende der Messung	08.02.2007
Dauer der Messung	152:27:50

Standort Daten	
Arbeitszeit Tage/Jahr	365
Kosten/kWh	0.080 €

Messdaten	Schnitt	Minimum	Maximum
Leistung [kW]	78.42	54.05	101.80
Druck [bar]	8.64	8.28	9.41
Verbrauch [m3/min]	9.78	6.74	12.70
System Ausnutzung [%]	52.59	38.25	68.28

Messung Gesamt		
Energie [kWh]	13256.48	Druckluft [m3] 88221.0
Energie Last [%]	96.87	Energie Leerlauf [%] 3.13
Effizienz [kWh/m3/min]	8.01840	Kosten/m3 0.011873 €
Last-Periode Gesamt	1027.28 €	Leerlauf-Periode Gesamt 33.24 €
Kosten Messung Gesamt	1080.52 €	

Jährliche Kalkulation Gesamt		
Last-Periode Gesamt	59023.84 €	Leerlauf-Periode Gesamt 1909.85 €
Jahresenergie Gesamt [kWh]	761868.83	Jahreskosten Gesamt 80933.49 €

Integrates all sensor types



Flowsensor



Dewpoint



Oiltemperature



Temperature



CT clamps



200 A



400 A



1000 A



WF STEUERUNGSTECHNIK GMBH

Zeppelinstr. 7-9, 75446 Wiernsheim
Tel. +49 7044 911100, Fax +49 7044 5717
www.airleader.de, info@airleader.de

Your consultant: